

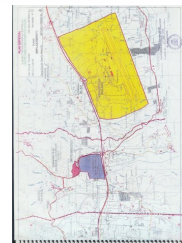
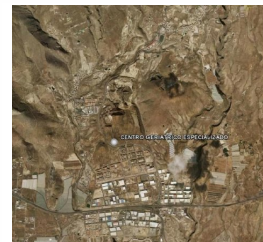
Soluciones

Tenerife

GERIATRIC WELFARE RESORT

The Serious Project, to develop a geriatric centre in a great location of the south of Tenerife, only 5 minute of Reina Sofia's Airport.

The project on 126.000 sm. of land, with full planning permission passed, with 25.000 sm. of building, with Apartments; Bungalows; Complementary Constructions; WellFare and Sanitary Geriatric; Center of Therapies; Center of Rehabilitation and Agricultural Park.



2010

CONTACT US NOW...

679 400 193 - e-mail: info@solucionestenerife.com

Price:

ON REQUEST...



WE OFFER YOU QUALITY OF LIFE

Ctra. General del Sur N° 79
38620 San Miguel de Abona
Santa Cruz de Tenerife
España

Teléfono: 679 400 193
Fax: 922 167 439
info@solucionestenerife.com

Ref: VA00027